



CTA Award-Winning Newsletter of the Garden Grove Education Association

ADVOCATE

GGEA is affiliated with the California Teachers Association and the National Education Association

VOLUME XLIX

ISSUE 2

October 2023

(714) 638-7480

CTA STATE COUNCIL

Allison Meyer, Kristy Gladysz, Steven Severance, and Bridget Holdermann attended the October 2023 CTA State Council meeting. They worked hard in their committees; Retirement, Early Childhood Education, Language Acquisition, and Negotiations, and attended the 1st General Session meeting between committee meetings. Sunday they attended the District M meeting, followed by the 2nd and 3rd General Session.

In this Issue:

CTA State Council

President's Message

What is the IMAD Award?

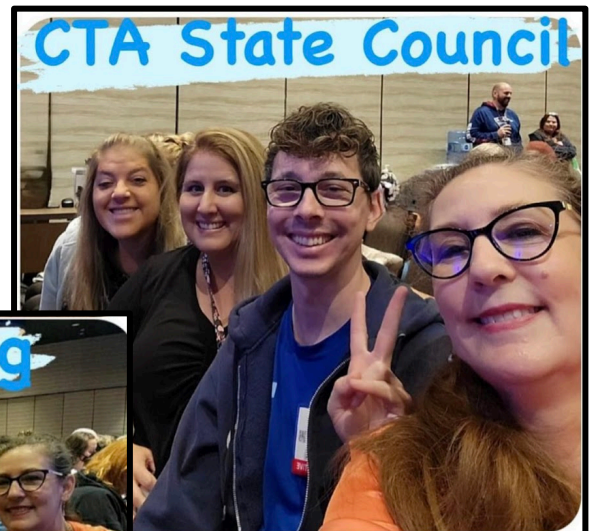
Clinton Corner Parent Resource Fair

SPED Committee Updates

TK Corner: CDE Questions and Answers

New Members

Assistance League Fundraiser



PRESIDENT'S MESSAGE

I remember when I first started teaching 33 years ago, listening to veteran teachers in the staff lounge talk about how the students had changed. They would say things like, "Students just aren't the same as when I first started teaching," or "Student behavior has gotten so much worse." Now, I am that veteran teacher in the lounge saying similar things.

But are the students that much different than the students from 33 years ago. I think not, instead they are trying to find their way through a changed world. They come to us with different "baggage" than the students of the 1990s. They must navigate social media, parent expectations, teacher expectations, and they survived a pandemic. Although not all their family members did.

Our traumas are also different. We also survived a pandemic. We also must navigate social media, implement changes to ed. code, and meet the increasing expectations placed on educators.

We are constantly reminded to meet the social emotional needs of our students. Remember, we also have social emotional needs. Let's look out for each other and remind our colleagues it's okay to take a moment to breathe and recenter ourselves during the day.



"That's my survival kit. It has a meditation tape, aspirin, and rose-colored glasses."

Garden Grove Education Association

12912 Brookhurst, Ste. 360
Garden Grove, CA 92840

Phone: 714-638-7480

Fax: 714-638-9167

Website: www.ggea.org

Email: president@ggea.org

Board of Directors

President

Bridget Holdermann
(GGEA Office)

1st Vice President

Nicole Ciccarelli-Lund (Lake)

2nd Vice President

Steven Severance (Paine)

Secretary

Rebecca Koopowitz (Jordan)

Treasurer

David Cho (Bolsa Grande)

High School Segment

Directors

Arquilla Howard (Rancho

Alamitos)

Cork Snider (La Quinta)

Intermediate Segment

Directors

Mike Godoy (Alamitos)

Veronica Conklin (Lake)

Elementary Segment Directors

Sarah Held (Garden Park)

Karyn Lui-Silverberg (Allen)

Dawn Floyd (Clinton)

Stacey Carter (Newhope)

Executive Director

Paul Kim

GGEA Office

WHAT IS THE IMAD AWARD??

The Human Rights Committee recognizes GGEA members who make a positive contribution outside of the classroom with the “I Make a Difference Award.” This award is given to members who volunteer their time and energy to benefit the school community or the community at large. Past IMAD winners have been involved in working in local charities, after school tutoring projects, library reading programs, soup kitchens, charity runs and human rights endeavors.

Nominations can be submitted to the GGEA Human Rights Committee via our website online form (located on Human Rights Committee page at [GGEA.org](https://www.ggea.org)) or emailed to humanrights@ggea.org. Nominations can be submitted by a single member, by a group of members, or by the entire school staff. Please include the following in your nomination:

- The nominee’s name, school and contact information
- His/her specific contribution (please provide details)
- Your name and contact information

Each month, the committee will honor an IMAD recipient at a Rep Council meeting and feature him/her in the *GGEA Advocate*.

NOMINATE A COLLEAGUE TODAY!!



CTA Members, take advantage of
Auto and Home/Renters Insurance that is...

Simple.
Trusted.
Affordable.
Right for you.



CalCas.com | 1.866.268.1754

CA Lic#041343 @2023 CCMC. Available in AZ, CA, CO, ID, KS,
OR & WY. Coverages are subject to availability and eligibility.

Advocate Editorial Staff:

Willie Burghard, Sara McCarthy, Bridget Holdermann, Susan Kaylor

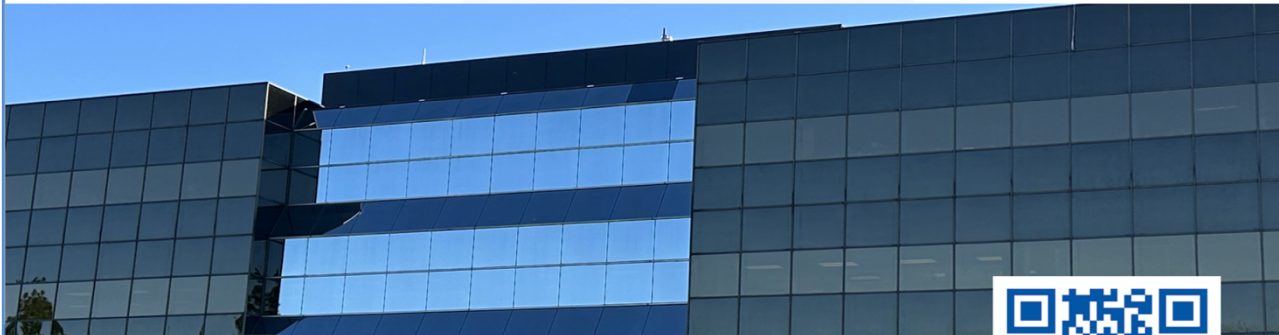
WWW.GGEA.ORG

Did you know your union has a website?



Garden Grove Education Association

- HOME
- GOVERNANCE
- COMMITTEES
- RESOURCES
- CONTRACT
- CALENDARS
- CONTACT



SCAN QR CODE TO VISIT GGEA.ORG

KEY FEATURES designed with YOU in mind:

- EASY CLICKABLE CONTRACT
- NEGOTIATIONS UPDATES
- BY LAWS & STANDING RULES
- INSURANCE INFORMATION
- CALENDARS
- CTA & NEA BENEFITS
- ADNOTES ARCHIVE
- ADVOCATE ARCHIVE

SEND US YOUR ARTICLES!

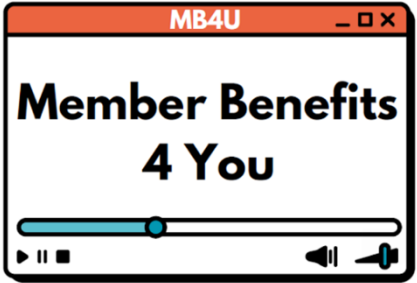
WE HAVE A **NEW GOOGLE FORM** FOR ADVOCATE SUBMISSIONS.

The Advocate is GGEA's monthly newsletter highlighting the fantastic teaching, events, and successes happening across our district.




SCAN THE QR CODE TO SUBMIT YOUR ARTICLES AND PHOTOS!

LOOK FOR A LINK IN THE ADNOTES TOO!

Join **CTA Member Benefits** every **first Tuesday of the month**, 4 pm PST, to learn about your member benefits. We will concentrate on a new topic each month and sessions will be up to 30 minutes.

You can access the session here:
<https://cta.webex.com/cta/j.php?MTID=m0d413b4fcd0c5ec55677615702f27e79>

For more information and a schedule of the upcoming sessions, please visit:
www.CTAMemberBenefits.org/MB4U

Good news - your special enrollment is extended!

Apply by **10/31/2023** for CTA-endorsed Disability and Life insurance with **no health questions asked.**

standard.com/cta/gardengrove

For costs and further details of the coverage and this enrollment opportunity, including the exclusions, benefit waiting periods, and reductions or limitations and the terms under which the policies may be continued in force, please contact Standard Insurance Company at 800.522.0406. GP190-LTD/S399/CTA.1 GP190-LIFE/S399/CTA.3

Calendar of Events

11/3	Non-Student Day/Staff Dev	12/5	Board of Directors
11/7	Board of Directors	12/12	Segments
11/10	Veterans' Day Observed	12/19	Representative Council
11/14	Segments	12/25-1/5	Winter Recess
11/20-24	Thanksgiving Recess		
11/28	Representative Council		



Clinton Corner Resource Fair

The Preschool Parent Resource Fair was held on October 5th between 3:30 PM and 5:00 PM at Clinton Corner Family Campus. It was a big success with students and their families attending from multiple school sites in Garden Grove USD.

There were numerous food vendors, face painting, craft vendors, GGUSD community organizations, and table games presented by the State Preschool Staff. Board members Teri Rocco and Dina Nguyen also attended.

A highlight was a special presentation from Superintendent, Dr. Gabriela Mafi and Director of Preschool Programs Dr. Emma Druitt on how to prepare your child for academic success, communication between home and school and nurturing your child's education in the home. Thank you to the event organizers, CCFC School Nurses Susan Lin and Stephanie Kovats, they worked diligently to put this together for our GGUSD community.



SPED Committee Updates

At Rep Council, the Special Education Committee began an ongoing series focused on IEP Best Practices. In this first presentation, the focus was on General Education participation in IEP meetings. When a student is in the General Educator's classroom for part or all of the day, Best Practice is to stay for the full meeting and to actively participate in the IEP process. General Education Teachers should be able to provide input on Present Levels, Goals, and Services. If a General Education Teacher or other team member disagrees with any part of an IEP, this should be noted in the Meeting Notes.

In the case that a student is not in the General Education class (this is most often the case with students in Moderate/Severe or alternative placements), a General Education Teacher is still legally required to be listed as a team member. They may be excused from the meeting early if parents/guardians are in agreement. It is Best Practice to have the Team Member Excusal form - indicating excusal in whole or part - signed prior to the meeting to avoid any legal complications or awkward situations.

YOU INSPIRE US

Extraordinary times can bring out the best in people. People like you, who have shown us all the meaning of dedication and community.

That's why we're honored to stand behind school employees and their families. Our entire reason for being is to help you prosper.

YOU'RE ELIGIBLE TO JOIN
schoolsfirstfcu.org/membership



MARIA H. AND FAMILY
Generations of Members Since 1983

TK CORNER

Questions and Answers from the California Department of Education on Transitional Kindergarten. Click the question links to see if your site is meeting these standards. This Q&A will also be posted on the ECE Committee page at GGEA.org.

Transitional Kindergarten Class Size and Ratio Information

1. [What are the adult-to-student ratios for Transition Kindergarten \(TK\) classrooms? \(Revised 26-Sep-2023\)](#)
2. [What is the adult-to-student ratio for Transitional Kindergarten \(TK\) during recess and lunch? \(Posted 19-Dec-2022\)](#)
3. [How is the average calculated for the 1:12 adult-to-student Transitional Kindergarten \(TK\) ratio? \(Posted 19-Dec-2022\)](#)
4. [Are Transitional Kindergarten \(TK\) classes required to maintain a school site average of 24 students? How is the average calculated? \(Posted 19-Dec-2022\)](#)
5. [Is it acceptable for a Transitional Kindergarten \(TK\) class to have more than 24 students if they maintain the 1:12 adult-to-student ratio? \(Posted 19-Dec-2022\)](#)
6. [Does the 1:12 adult-to-student ratio need to be maintained at all times during the instructional day? \(Updated 26-Sep-2023\)](#)
7. [Can a special education aid or a speech therapist assigned to work with specific students in the Transitional Kindergarten \(TK\) classroom be counted in the 1:12 ratio? \(Revised 26-Sep-2023\)](#)
8. [Can an adult assigned to a Transitional Kindergarten \(TK\) classroom on a part-time basis be counted in the 1:12 ratio? \(Posted 19-Dec-2022\)](#)
9. [Do the Transitional Kindergarten \(TK\) class size and adult-to-student ratio requirements apply to all students in combination classes, or only to the Transitional Kindergarten students in the class? \(Updated 26-Sep-2023\)](#)
10. [Do the Transitional Kindergarten \(TK\) class size and adult-to-student ratio apply to students participating in independent study? \(Posted 19-Dec-2022\)](#)
11. [Do the Transitional Kindergarten \(TK\) class size and adult-to-student ratio requirements apply to special education students? \(Posted 19-Dec-2022\)](#)
12. [Can a school district or charter school apply for a waiver for the Transitional Kindergarten \(TK\) classroom enrollment and ratio requirements? \(Posted 19-Dec-2022\)](#)
13. [Can we have a Transitional Kindergarten \(TK\) class with more than 24 students if we add a third adult? \(Posted 19-Dec-2022\)](#)
14. [Are Transitional Kindergarten \(TK\) students who are ineligible to generate Average Daily Attendance, due to their age, included in the TK class size and adult-to-student ratio counts? \(Updated 26-Sep-2023\)](#)

Instructional Time and TK

1. [Is there a specific number of instructional minutes required for Transitional Kindergarten \(TK\)? \(Posted 19-Dec-2022\)](#)
2. [Must a student admitted to Transitional Kindergarten \(TK\) at the start of the school year whose fifth birthday occurs after the applicable TK eligibility cut-off date of that same school year be scheduled for and offered the required instructional minutes in California *Education Code \(EC\)* for TK/Kindergarten? \(Posted 19-Dec-2022\)](#)
3. [Are instructional minutes for Transitional Kindergarten \(TK\) and Kindergarten inclusive of recess? \(Revised 26-Sep-2023\)](#)
4. [Are instructional minutes for Transitional Kindergarten \(TK\) and Kindergarten inclusive of breakfast? \(Revised 26-Sep-2023\)](#)

5. [Are instructional minutes for Transitional Kindergarten and Kindergarten inclusive of lunch? \(Posted 19-Dec-2022\)](#)
6. [If naptime is built into the daily schedule for Transitional Kindergarten \(TK\), does this time count as instructional minutes? \(Posted 19-Dec-2022\)](#)

Early Enrollment Children

1. [Can children with summer birthdays enroll in a Transitional Kindergarten \(TK\) program? \(Posted 26-Sep-2023\)](#)
2. [What is an "early enrollment child"? \(Posted 26-Sep-2023\)](#)
3. [Are school districts and charter schools required to admit "early enrollment children" into a Transitional Kindergarten \(TK\) program? \(Posted 26-Sep-2023\)](#)
4. [Are the statutory requirements for Transitional Kindergarten \(TK\) classrooms that admit "early enrollment children" the same as those that do not have any "early enrollment children"? \(Posted 26-Sep-2023\)](#)
5. [Can a school district or charter school admit children who turn 4 after September 1st into a Transitional Kindergarten \(TK\) program in the 2023-24 and 2024-25 school years? \(Posted 26-Sep-2023\)](#)
6. [Do "early enrollment children" generate Average Daily Attendance \(ADA\)? \(Posted 26-Sep-2023\)](#)
7. [How is the 1:10 adult-to-student Transitional Kindergarten \(TK\) ratio calculated? \(Posted 26-Sep-2023\)](#)
8. [Are Transitional Kindergarten \(TK\) classes with early enrollment children required to maintain a classroom enrollment of 20 students? How is the classroom enrollment calculated? \(Posted 19-Dec-2022\)](#)
9. [What are the penalties for not meeting the early enrollment Transitional Kindergarten \(TK\) requirements for class size, adult-to-student ratios, and teacher credentialing? \(Posted 26-Sep-2023\)](#)
10. [Are the requirements for early enrollment children waivable? \(Posted 26-Sep-2023\)](#)
11. [If a class includes a combination of age-eligible and early enrollment children, what requirements must be met? \(Posted 26-Sep-2023\)](#)
12. [Must an early enrollment child be offered the required instructional minutes and days in California Education Code \(EC\) for Transitional Kindergarten \(TK\)? \(Posted 26-Sep-2023\)](#)
13. [How are the requirements for the 1:10 adult-to-student ratio and class size of no more than 20 calculated for Traditional Kindergarten classrooms with early enrollment children? How will the respective audit penalties be assessed? \(Posted 26-Sep-2023\)](#)



GGEA New Members

Taly Argueta
 Karen Barron
 Reis Birkett
 Anna Buzzone
 Paul Cao
 Jessica Chavez
 Jenna Farboud
 April Fernsten

Carly Holton
 Leslie Huynh
 Christina Jimenez
 David Kim
 Joy Kun
 Jenny Le
 Amanda Mata
 Melissa McPheeters

Carrie Steele
 Jenna Thomas
 Ashley Trujillo
 Jacqueline Vergel de
 Dios
 Terry Wilson
 Aaron Wood



Transforming Lives • Strengthening Community

Baskets & Bargains

10932 Trask Avenue, Garden Grove 92843 (714-530-2340)

Friday	November 17, 2023	11:00 a.m. to 3:00 p.m.
Saturday	November 18, 2023	11:00 a.m. to 3:00 p.m.
Sunday	November 19, 2023	Noon to 3:00 p.m.

A Holiday Extravaganza

Please join us for this fun free three-day event!

*Gift Baskets *Collectibles *Holiday Items *Bake Sale*

Vendors and Silent Auction

Light Refreshments



Opportunity Drawings

GRAND PRIZE - \$500 CASH

2ND PRIZE - \$250 CASH

\$1.00 per ticket or 12 for \$10.00

You can purchase tickets from any League member.

Drawing to be held Sunday, November 19, 2023, at 2:30 p.m.

WINNERS NEED NOT BE PRESENT TO WIN

OUR MISSION:

Assistance League volunteers transforming the lives of children through community programs.

All proceeds benefit Operation School Bell® and Guardian Scholars